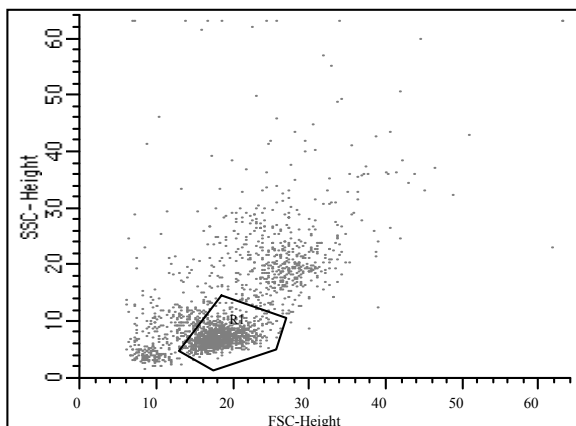


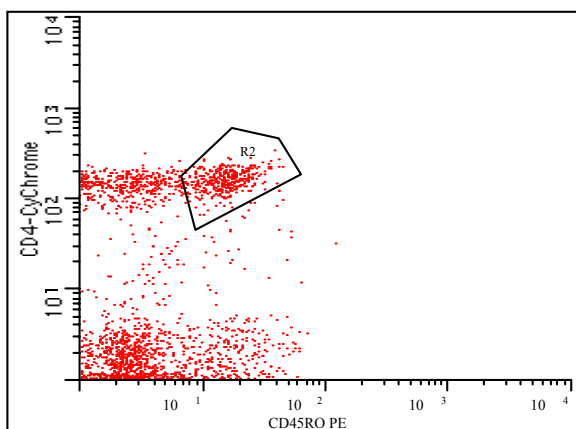
VIROTECT™ PLUS

HIV-1 IN CELL DETECTION SYSTEM

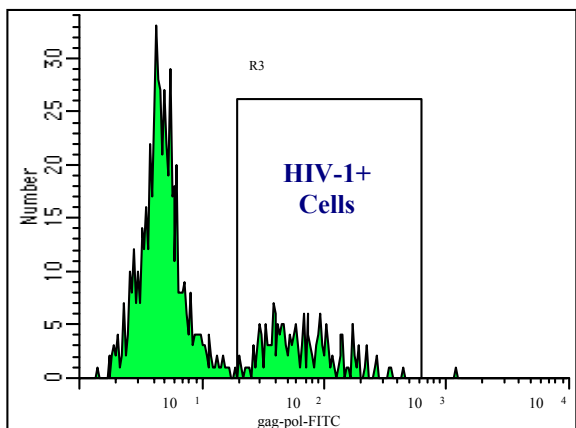
Detection and Quantification of HIV-1 in Cellular Reservoirs



GATE 1: Lymphocytes or monocytes by scatter



GATE 2: CD4+, CD45RO+ T-cells or CD14+/CD16+ monocytes



Quantification by a single parameter histogram

Typical results obtained with ViroTect HIV-1 In Cell Detection System Compared to Plasma Viral Load

- **ViroTect** determines and quantifies HIV in specific cell reservoirs such as T-Cell populations, macrophages and monocytes (as HIV replication can vary in different cell types and response to therapy may be cell-type dependent).
- Provides critical cell-specific information to determine the efficacy of HIV-1 therapeutics such as HAART therapy, adoptive transfer of HIV-1-specific CD8 T-Cells, vaccines and entry inhibitors, in the cell.

Gating with ViroTect

- Histogram gating with **ViroTect** is first performed on lymphocytes then on CD4+/CD45RO+ (or CD14+/CD16+ sub-populations).
- This population is analyzed for the percentage of HIV positive cells. Negative controls from HIV negative individuals are run to establish the cutoff as illustrated in the histogram below. HIV-1 positive cells appear as a single peak (in the box) which can be quantified and followed over time.

<i>Ranges Relative to Plasma Viral Load (PVL)</i>	
ViroTect^{Plus} HIV-1 (T-cell)	<u>PVL</u>
0.3% (95% C.I. 0.0%-0.6%)	<20 copies/mL
0.8% (95% C.I. 0.5%-0.9%)	<50 copies/mL
1.2% (95% C.I. 0.9%-1.5%)	<400 copies/mL
Ref: Patterson, B.K. AIDS, 15:1635-1641, 2001	

For More Information Contact: www.invirion.com
 Invirion Diagnostics, LLC
 1900 Spring Road, Suite 200, Oak Brook, IL 60523
 Phone, 630-954-2875

